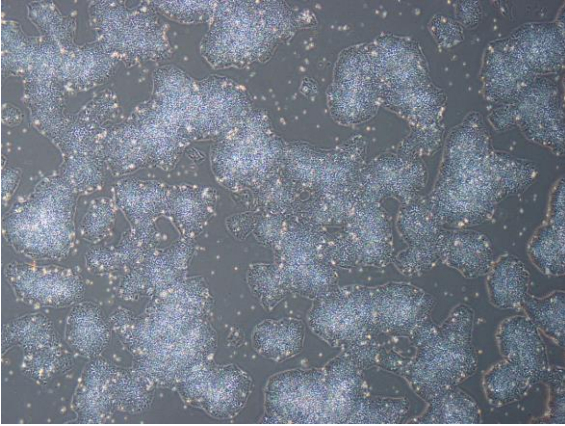
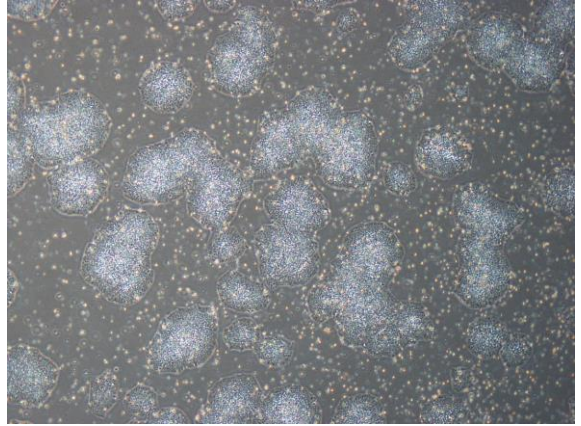


【 CiRA-j-1601 】 Morphology of iPSC colonies

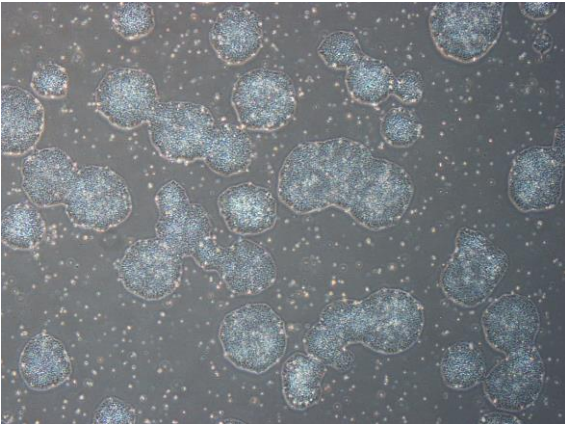
CiRA-j-1601-A: passage-3



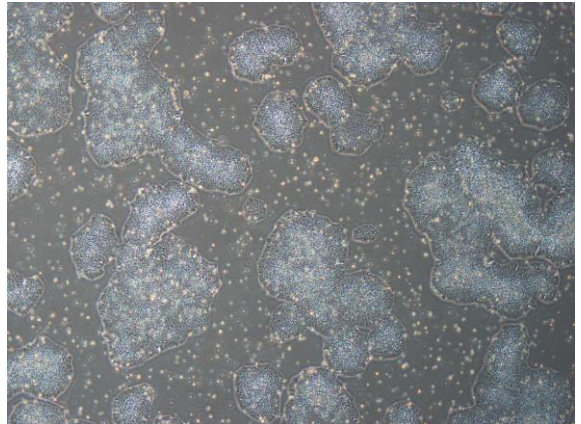
CiRA-j-1601-B: passage-3



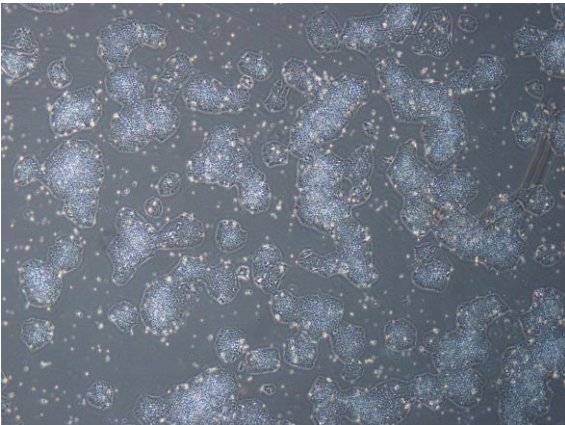
CiRA-j-1601-C: passage-3



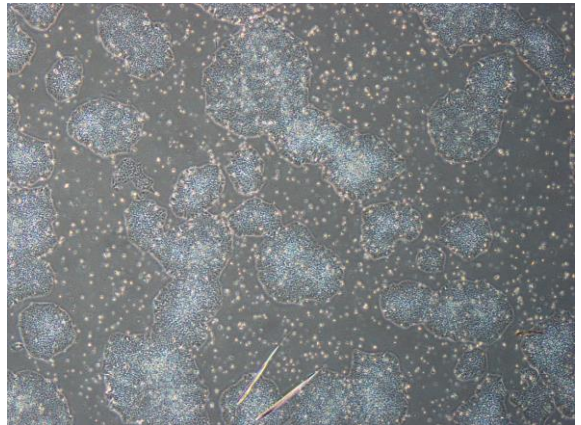
CiRA-j-1601-D: passage-3



CiRA-j-1601-E: passage-3



CiRA-j-1601-F: passage-3



(All images were captured at 4x magnification)